



Flocked Flooring Planks

flotex® planks



25 x 100 cm

creating better environments

forbo
FLOORING SYSTEMS



flotex[®] planks

The smart flooring solution

Durable. Hygienic. Inspirational.

Flotex represents the next generation of flooring - a high-performance surface engineered for durability, comfort, and visual impact. Combining a robust structure with a soft, quiet underfoot environment, it delivers long-term resilience in the most demanding spaces.



Innovation meets modular design

Flotex Planks redefine modular flooring with creative freedom. Combine colours and patterns to create dynamic, inspiring spaces. Easy to handle and install, the modular plank format offers flexibility for both renovations and large-scale projects.

Durability and comfort guaranteed

- Exceptional surface durability, achieved through a density of up to 80 million nylon 6.6 fibres per square metre.
- Provides a comfortable and warm underfoot environment, delivering an impact sound reduction of 19 dB, to enhance wellbeing and concentration.
- Particularly suitable for heavy commercial applications thanks to its anti-slip properties and ability to retain its appearance and performance.

Hygienic and easy to maintain

- Dust and allergens are efficiently captured by the nylon fibres, and effortlessly released during cleaning.
- Easily washable and fast-drying for rapid maintenance and minimal downtime. Most type of stains can be removed with water only.
- Certified by the British Allergy Foundation, guaranteeing improved indoor air quality.

Designed to inspire

- Fourteen distinctive, true to nature, digitally printed designs available in a curated range of modern and on-trend colours.
- Modular planks can be installed in a variety of configurations - from brick to herringbone - for unlimited design freedom.
- Mix and match patterns and coordinating colours available to create dynamic visual transitions and distinctive areas.







○ = superior appearance rating

◐ = good appearance rating

● = moderate appearance rating

For less environmental impact, the majority of samples in this book do not include tile backing.

Full samples can be obtained by contacting your Customer Service team.

flotex® planks

seagrass | sierra



111001 | pearl LRV 26% ●



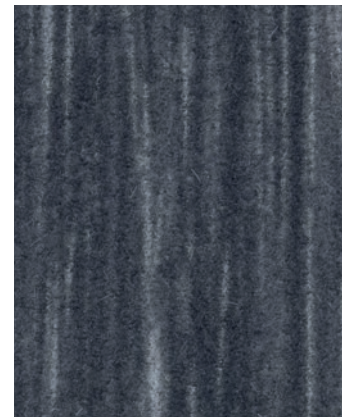
111003 | almond LRV 19% ●



111007 | teak LRV 8% ○



111004 | charcoal LRV 9% ○

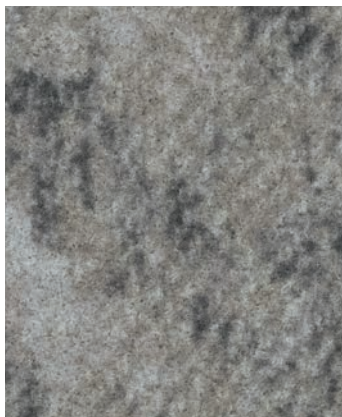


111008 | ebony LRV 5% ○

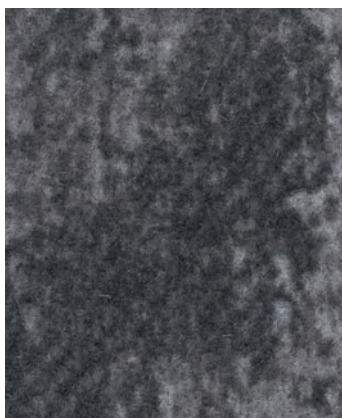


111002 | cement LRV 13% ○

Seagrass 111001 | pearl 111003 | almond 111007 | teak



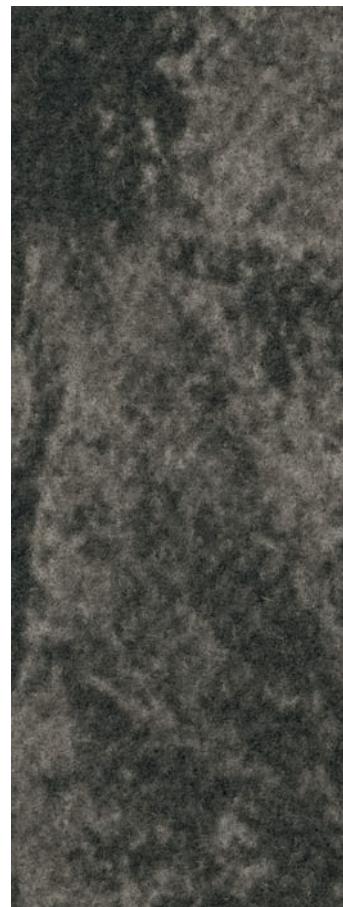
158002 | cascade LRV 15% ●



158003 | ravine LRV 8% ●



158001 | solano LRV 11% ●



158004 | canyon LRV 7% ○



Sierra 158002 | cascade

flotex® planks

wood



151003 | silver wood LRV 31% ●



151004 | American wood LRV 15% ○



151008 | rustic wood LRV 13% ○



151007 | English wood LRV 13% ○



151010 | drift wood LRV 12% ○



151009 | cedar wood LRV 6% ○



151002 | grey wood LRV 13% ○



151006 | antique wood LRV 9% ○



151005 | red wood LRV 9% ○



151001 | black wood LRV 8% ○



Wood 151009 | cedar wood

flotex® planks

travertine

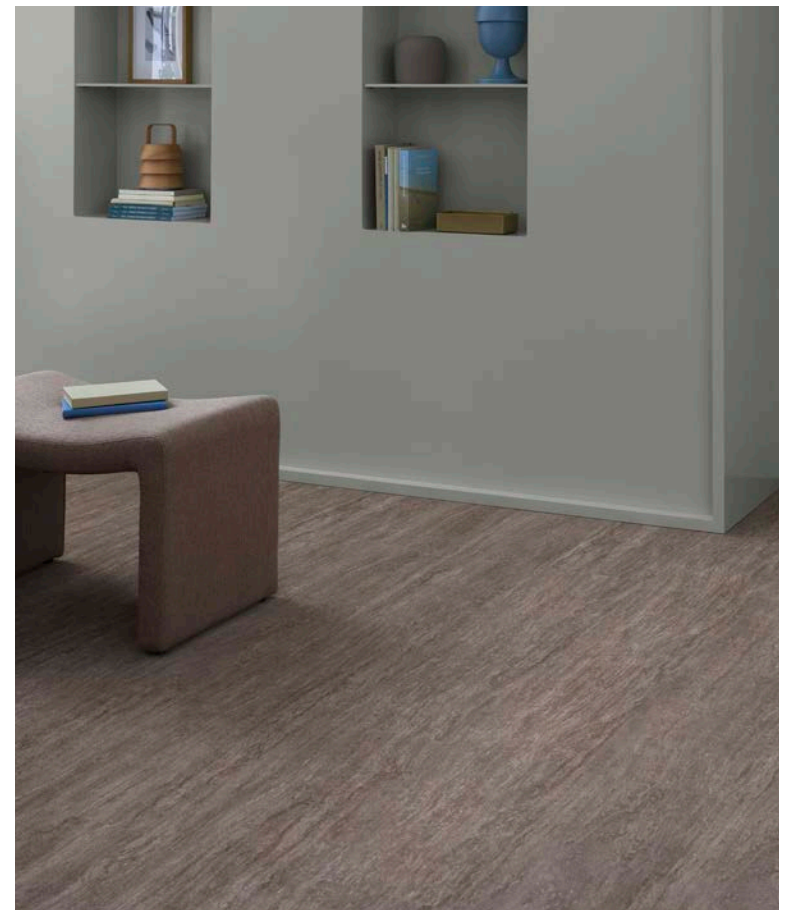


Travertine 157002 | verdejo

157004 | alberino LRV 31% ●

157002 | verdejo LRV 20% ●

157003 | muscato LRV 20% ●



157005 | grigio LRV 18% ●

157001 | rosé LRV 15% ●

157006 | blush LRV 19% ○

Travertine 157006 | blush

flotex® planks

concrete | neo concrete

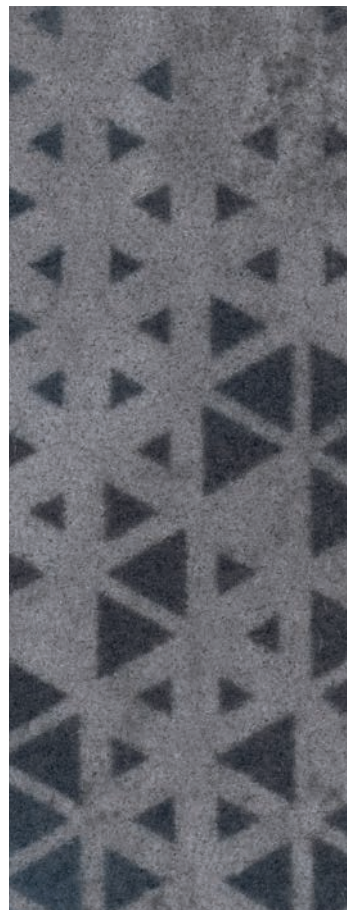
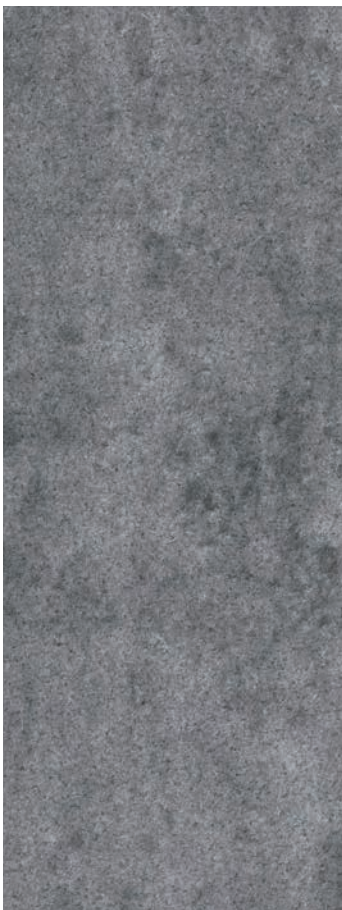


Concrete 139001 | cloud Neo concrete 139021 | neo cloud

139001 | cloud LRV 18% ○

139003 | smoke LRV 16% ○

139002 | thunder LRV 11% ○



139005 | dusk LRV 15% ●

139020 | neo dusk LRV 14% ●

139021 | neo cloud LRV 17% ●

139022 | neo smoke LRV 12% ●

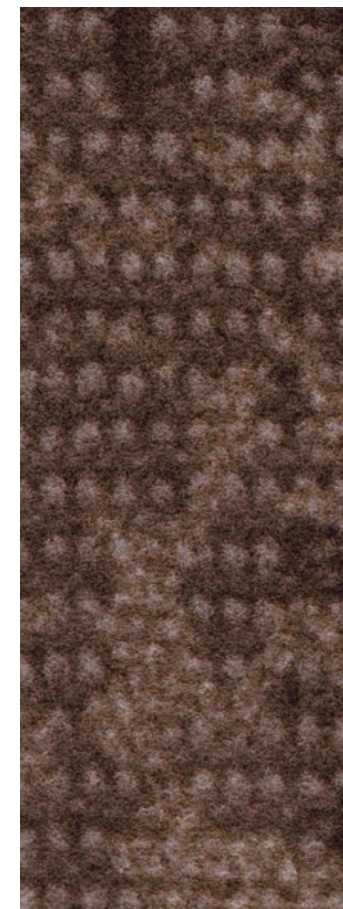
139023 | neo thunder LRV 8% ○



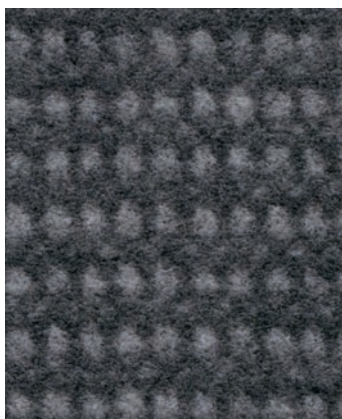
Ombre 149008 | tundra Montage 147008 | tundra Ombre 149005 | estuary Montage 147005 | estuary



149008 | tundra LRV 13% ○



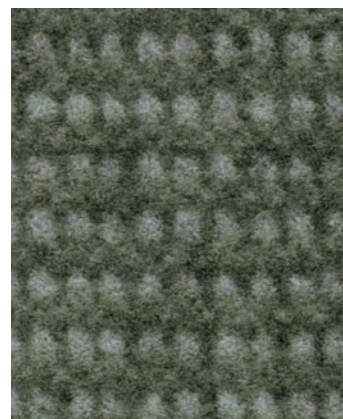
147008 | tundra LRV 8% ○



149007 | arctic LRV 11% ○



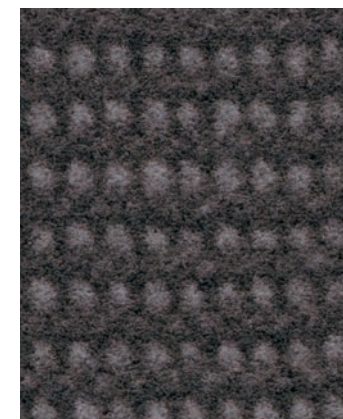
149005 | estuary LRV 13% ○



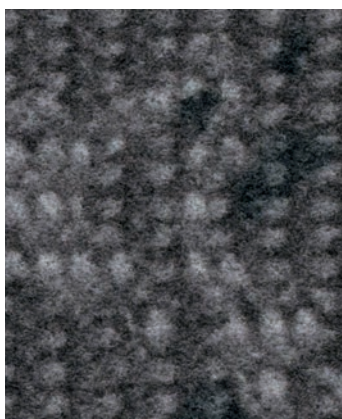
149001 | boreal LRV 15% ○



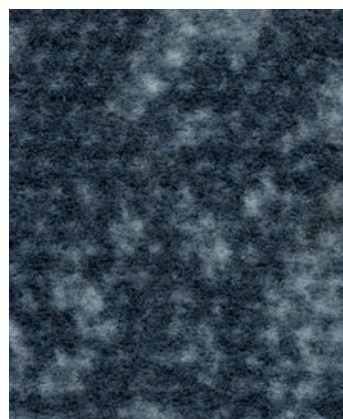
149004 | moraine LRV 14% ○



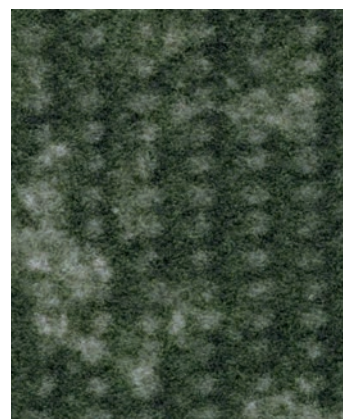
149003 | tropic LRV 11% ○



147007 | arctic LRV 8% ○



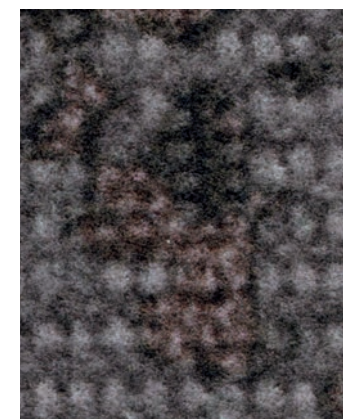
147005 | estuary LRV 8% ○



147001 | boreal LRV 9% ○



147004 | moraine LRV 8% ○



147003 | tropic LRV 7% ○

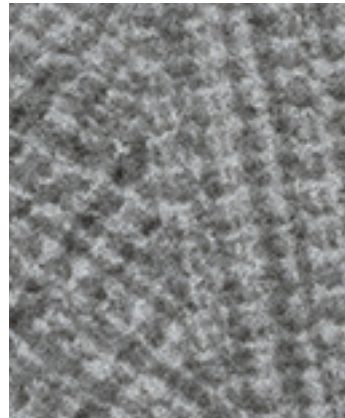
ombré = 149xxx / montage = 147xxx

flotex® planks

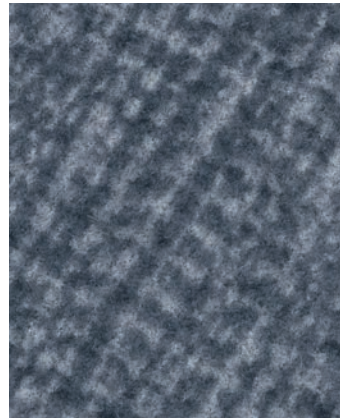
converge | converge plain



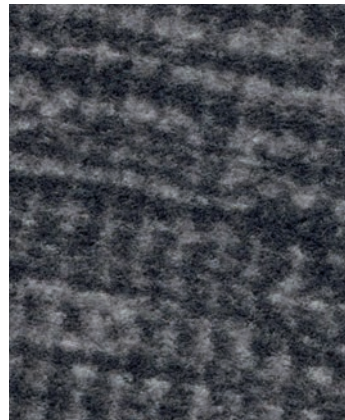
141001 | prism LRV 5% ○



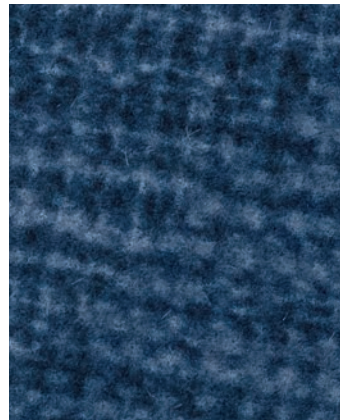
141009 | calcite LRV 16% ●



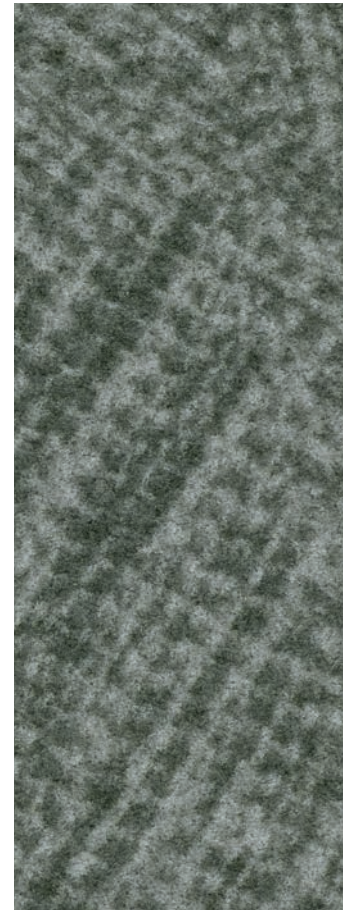
141019 | dolomite LRV 7% ●



141006 | arc LRV 8% ○



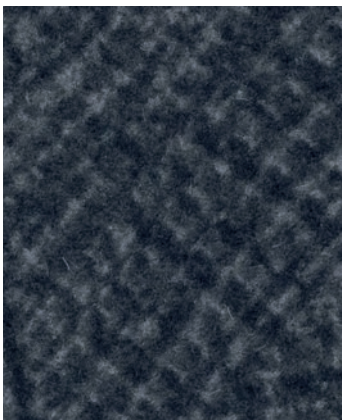
141020 | lapis LRV 5% ○



141016 | mica LRV 22% ●



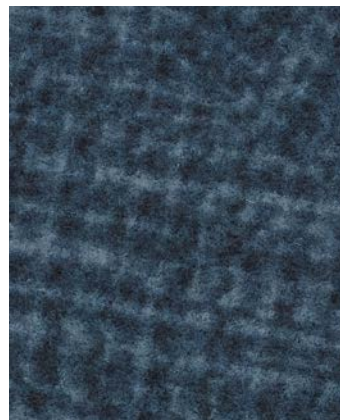
141002 | aurora LRV 5% ○



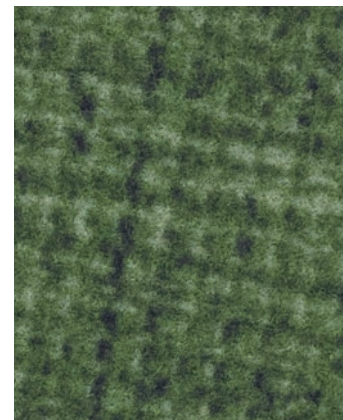
141023 | galena LRV 4% ○



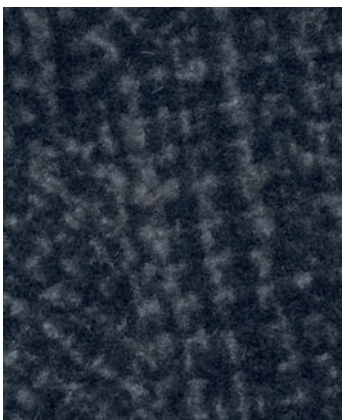
141003 | zenith LRV 5% ○



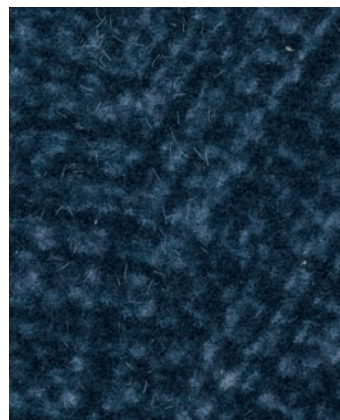
141015 | azurite LRV 8% ○



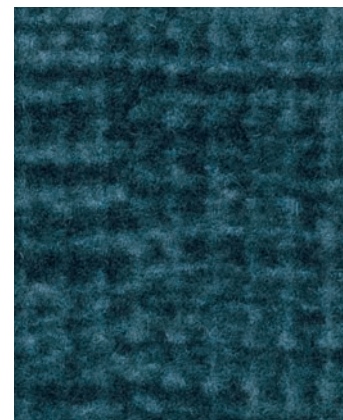
141017 | peridot LRV 15% ●



141025 | basalt LRV 4% ○



141024 | cobalt LRV 4% ○



141013 | turquoise LRV 5% ○

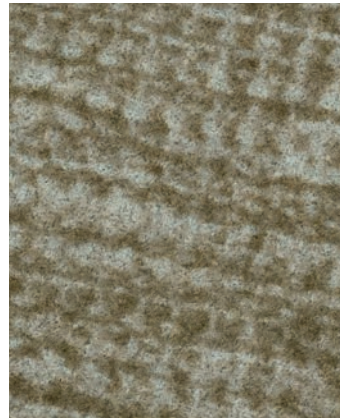


141018 | jasper LRV 18% ○

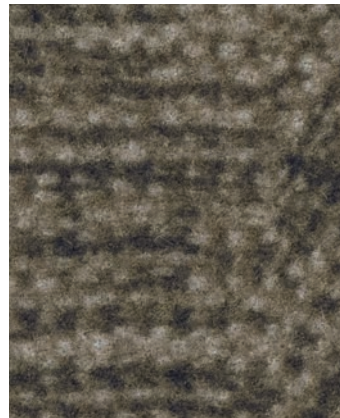
Area shown of converge is: 65,5 x 24,5 cm - Information on complementary colours is referenced in the brochure.

flotex® planks

converge | converge plain



141010 | baryte LRV 16% ●



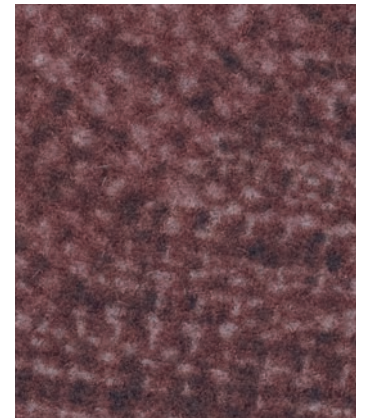
141012 | onyx LRV 6% ○



141008 | apex LRV 4% ○



141014 | halite LRV 6% ○

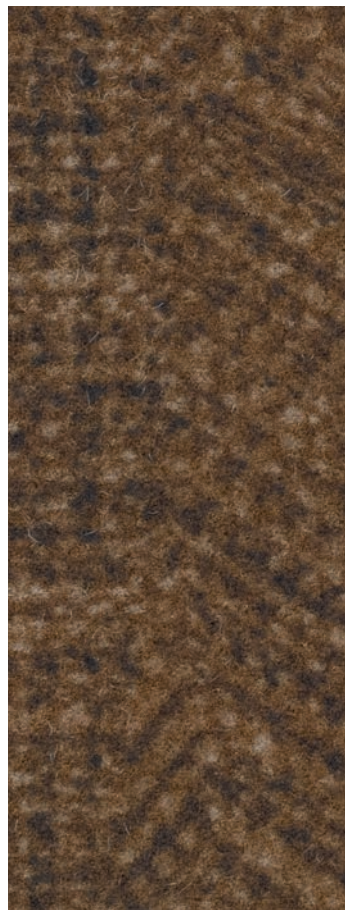


141022 | ruby LRV 5% ○

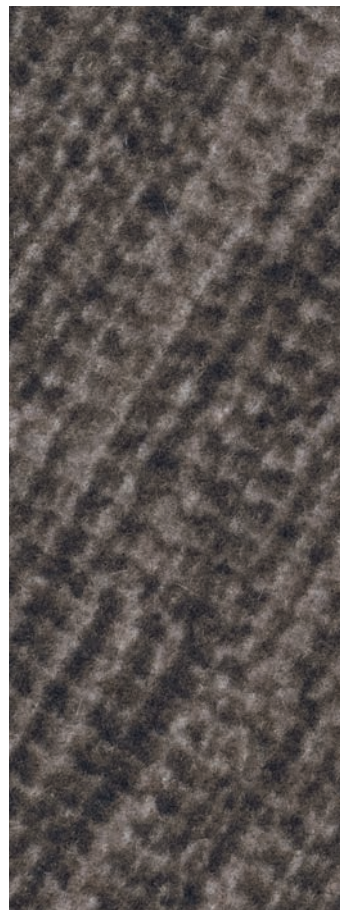
Converge 141008 | apex Converge plain 141011 | zircon



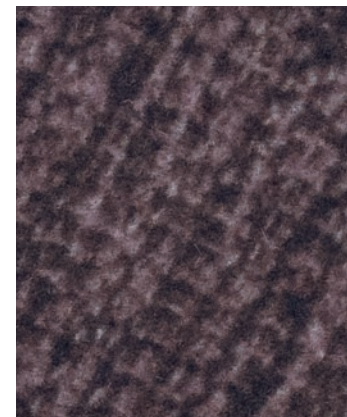
141004 | sunbeam LRV 6% ○



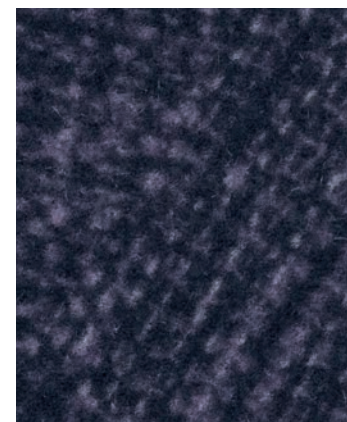
141021 | amber LRV 6% ○



141011 | zircon LRV 7% ○



141027 | garnet LRV 5% ○



141026 | amethyst LRV 4% ○

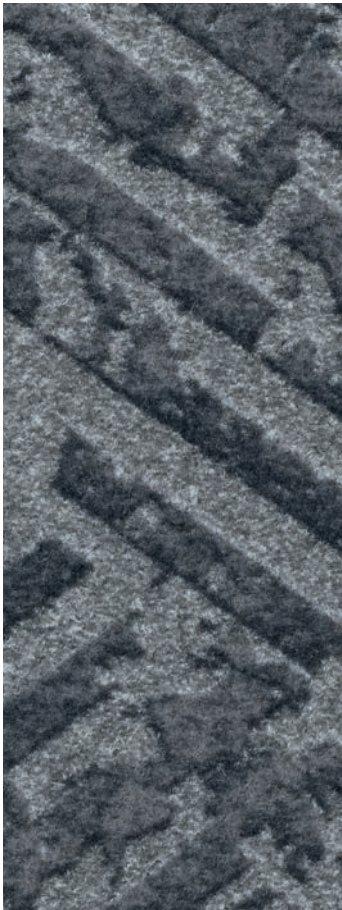


141005 | radiant LRV 6% ○

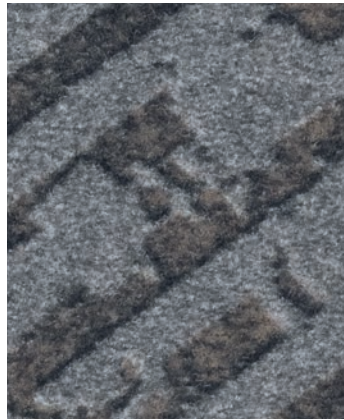
Area shown of converge is: 65,5 x 24,5 cm - Information on complementary colours is referenced in the brochure.

flotex® planks

intersect | serif



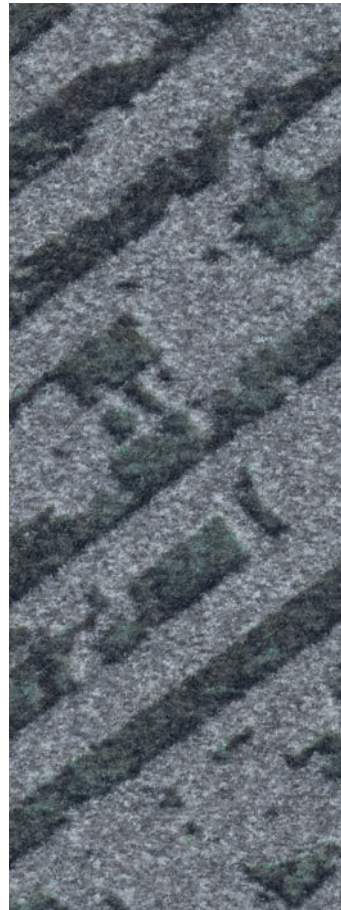
152002 | chrome LRV 11% ●



152003 | bronze LRV 10% ●



152001 | zinc LRV 9% ●



152004 | copper LRV 11% ●



Intersect 152004 | copper Panama 156002 | cardamom



Serif 154006 | alloy 154001 | iron



154006 | alloy LRV 8% ○



154003 | patina LRV 6% ●



154002 | rust LRV 6% ○



154005 | tungsten LRV 6% ○



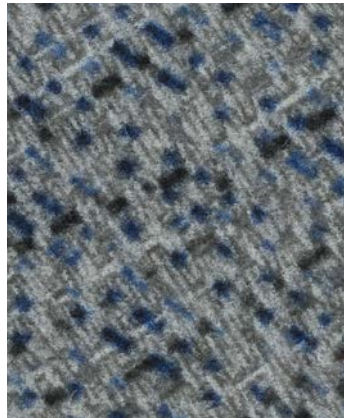
154001 | iron LRV 5% ○



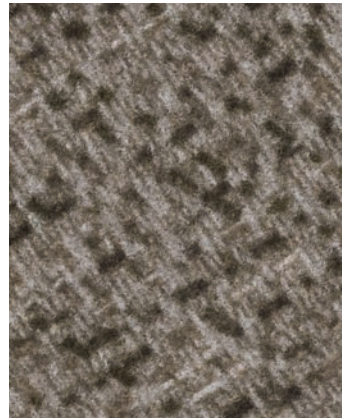
154004 | magma LRV 5% ○



156003 | anise LRV 11% ●



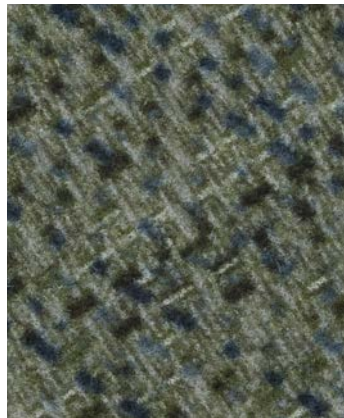
156001 | salt LRV 12% ●



156005 | clove LRV 12% ○



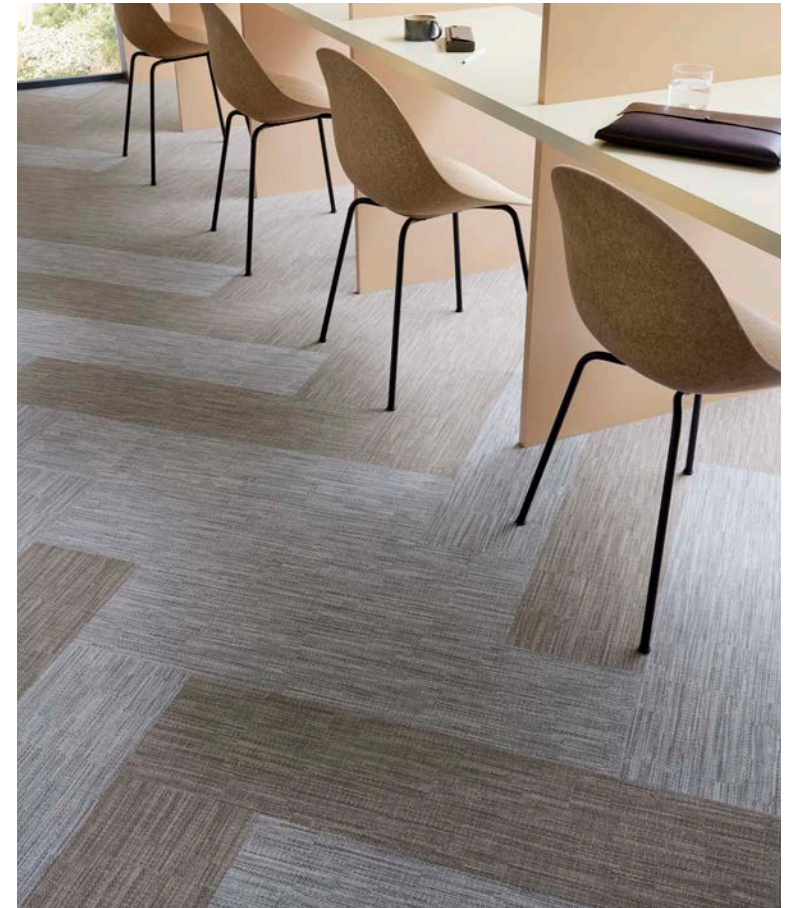
156004 | tamarind LRV 9% ○



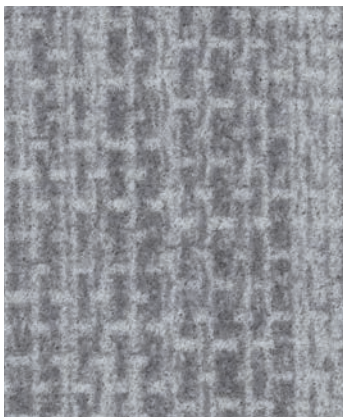
156002 | cardamom LRV 9% ○



156006 | paprika LRV 12% ○



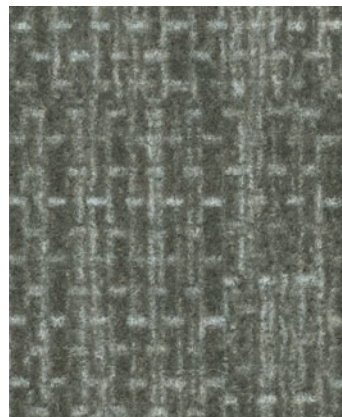
Calico 155009 | putty 155007 | chalk



155007 | chalk LRV 22% ●



155008 | gesso LRV 15% ●



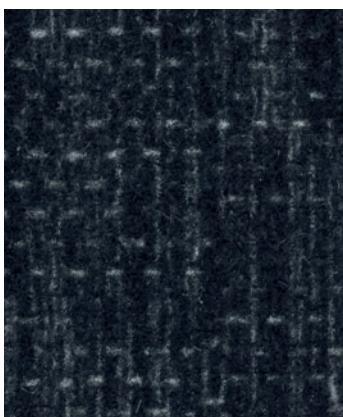
155006 | hemp LRV 11% ●



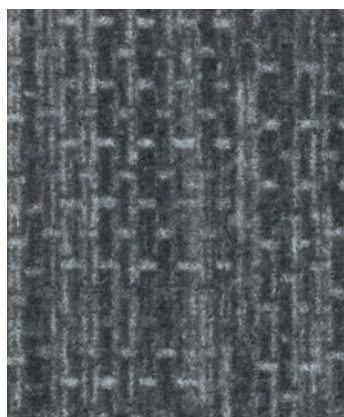
155009 | putty LRV 18% ●



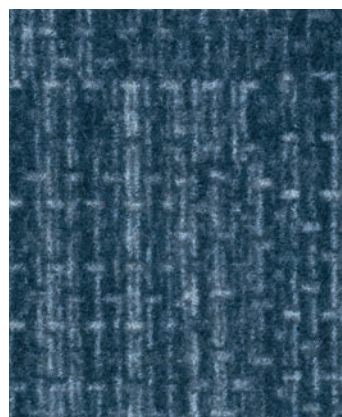
155004 | clay LRV 17% ●



155002 | raku LRV 3% ○



155003 | etch LRV 9% ●



155010 | glaze LRV 7% ●



155005 | burlap LRV 7% ○



155001 | rattan LRV 11% ○









Technical specifications

Flotex Planks meet the requirements of EN 1307



Flotex Planks		
	Total thickness	ISO 1765 5.0 mm
	Total weight	ISO 8543 4800 g/m ²
	Commercial use	EN-ISO 10874 Class 33
	Pile composition	100% polyamide 6.6
	Plank size	100 x 25 cm
	Packaging per carton	10 (2,5 m ²)
	Dimensional stability	EN 986 ≤ 0.1%
	Slip resistance	BS 7976-2 (UK SRG pendulum) Dry - low slip risk Wet - low slip risk
	Acoustic impact noise reduction	EN-ISO 717-2 $\Delta L_w \geq 19$ dB
	Acoustic sound absorption	ISO 354 $\alpha_w = 0.10$ (H)
	Castor chair continuous use	ISO 4918 $r \geq 2.4$
	Colour fastness to light	EN ISO 105-B02 ≥ 5
	Indoor Emissions: TVOC after 28 days	EN 16516 ≤ 0.1 mg/m ³
	Abrasion resistance	EN 1307 annex F >1000 cycles
	Water impermeability	EN 1307 annex G Pass
	Creating better environments	
	Renewable electricity	Flotex is manufactured using 100% electricity made from renewable resources.
	Recycled content	Flotex Planks contain up to 59% recycled content by weight.
	Indoor air quality	Flotex is approved by Allergy UK. All Flotex products are tested for indoor air emissions in accordance with EN 16516 after 3 days and 28 days.
	LCA	Life Cycle Assessment is the foundation for securing the lowest environmental impact.
	SKA	Flotex meets SKA Rating criteria for M12 for soft floor coverings in office, retail and higher education schemes.

Flotex Planks meet the requirements of EN 14041:2004



	Productcode	EN 14041	1200201-DOP-101
	Productcode	BS EN 14041	1200201-DOP-GB108
	Reaction to fire	EN 13501-1	B _f -s1, L, CS
	Slip resistance	EN 13893	$\mu \geq 0.30$
	Thermal conductivity	EN 12524	0.06 W/mK
	Body voltage	ISO 6356	≤ 2.0 kV
	Content of specific dangerous substances	EN 14041	Compliant

Our recommended tackifier for our collection for Flotex Modular is 542 eurofix tack plus. Please contact customer services for more information.
All Forbo Flooring Systems' sales organisations worldwide have a certified Quality Management System in accordance with ISO 9001.
All Forbo Flooring Systems' manufacturing operations have a certified Environmental Management System in accordance with ISO 14001.
The Life Cycle Assessment (LCA) of Forbo Flooring Systems' products is documented in individual Environmental Product Declarations (EPD's) which can be found on all of our websites.



Belgium

Forbo Flooring
't Hofveld 4B 001
1702 Groot-Bijgaarden
Tel: +32 2 464 10 10
Fax: +32 2 464 10 11
info.belgium@forbo.com
www.forbo-flooring.be

Norway

Forbo Flooring AS
Hagaløkkveien 7
1383 Asker
T: +66 77 12 00
F: +66 77 12 40
info.norway@forbo.com
www.forbo-flooring.no

Poland

Forbo Flooring Polska
ul. Jeleniogórska 16
60-179 Poznań
T: +48 (61) 862 13 82
F: +48 (61) 622 71 75
info.pl@forbo.com
www.forbo-flooring.pl

Other Countries

Forbo Flooring B.V.
P.O. Box 13
1560 AA Krommenie
The Netherlands
T: +31 75 647 74 77
question@forbo.com
www.forbo-flooring.com

Find us on



creating better environments



FLOORING SYSTEMS